

Key to the semimonthly bar chart

Absent

- Single records of very rare birds
- Multiple records of very rare birds
- Rare and irregular; single records on <15% of trips
- Rare but regular; expected in low numbers on 15-50% of trips
- Uncommon; expected in low to good numbers on 50-85% of trips
- Common; expected in good numbers on most trips

This checklist was composed primarily to show the large potential for pelagic rarities off Oregon. Full day boat trips out 35 miles are likely to find most of the species indicated as Common and Uncommon, as well as a few of the Rare but regular seabirds, in season. The rare and irregular species as well as the very rare species are not expected. Special trips may improve the chances of seeing one of these, but these birds are not assured at any time.

Marine Mammals of Oregon

Northern Fur Seal	Risso's Dolphin (Grampus)
California Sea Lion	Pacific White-sided Dolphin
Steller's (Northern) Sea Lion	Northern Right Whale Dolphin
Harbor Seal	Killer Whale (Orca)
Northern Elephant Seal	False Killer Whale
North Pacific Right Whale	Striped Dolphin
Common Minke Whale	Rough-toothed Dolphin
Bryde's Whale	Common Bottlenose Dolphin
Sei Whale	Harbor Porpoise
Blue Whale	Dall's Porpoise
Fin Whale	Sperm Whale
Humpback Whale	Pygmy Sperm Whale
Gray Whale	Dwarf Sperm Whale
Long-beaked Common Dolphin	Baird's Beaked Whale
Short-beaked Common Dolphin	Hubb's Beaked Whale
Short-finned Pilot Whale	Cuvier's Beaked Whale

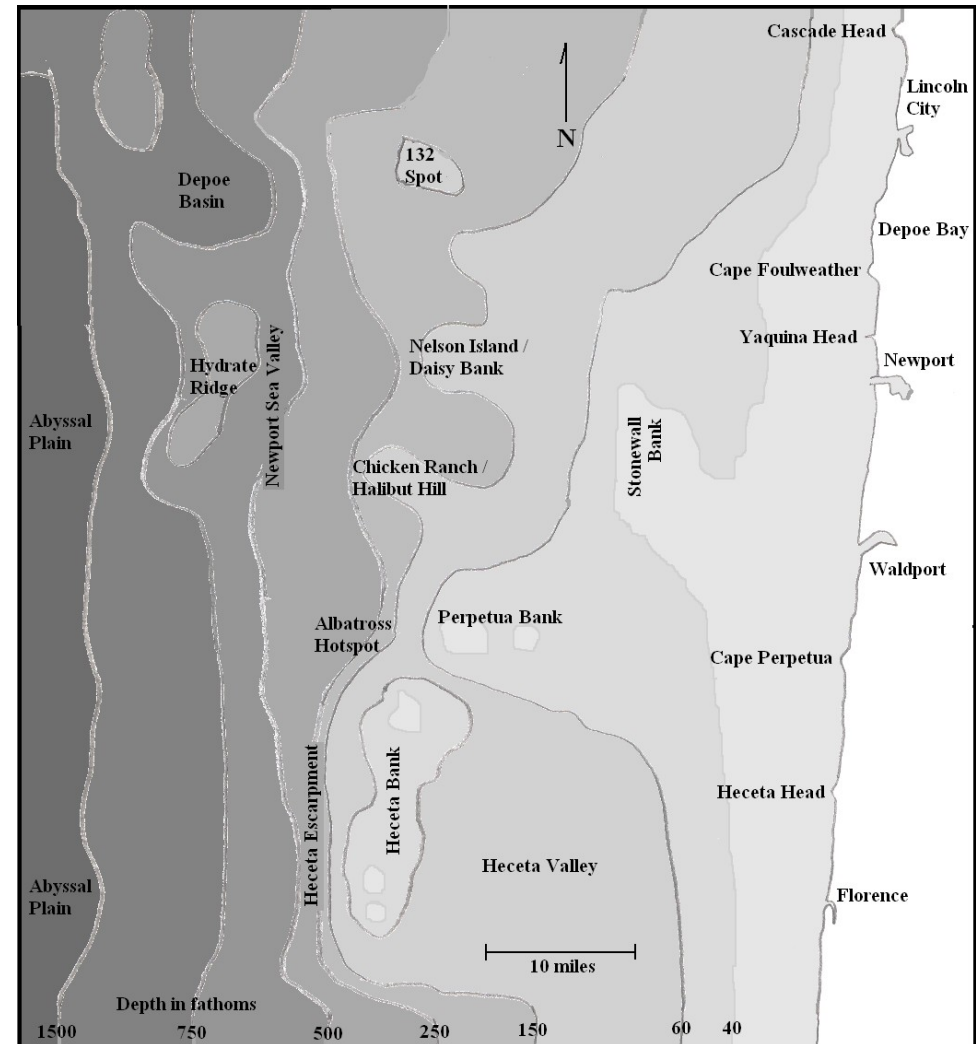
Guided bird watching boat trips off the Oregon coast!

Please, join us as we share with you the excitement and wonder of this truly unique birding adventure. Your friendly, helpful, and knowledgeable guides will help you spot and identify all the birds and marine mammals and learn about their fascinating life histories.

The Bird Guide, Inc.
<http://thebirdguide.com/pelagics/>

Checklist to the Pelagic Birds of Oregon

Seafloor topography of the central Oregon coast



Copyright © 2012 by The Bird Guide, Inc., all rights reserved.
<http://thebirdguide.com/pelagics/>

	Jan	Feb	Mar	Apr	May	Jun	Jul	Aug	Sep	Oct	Nov	Dec
Wandering Albatross									•			
Shy Albatross										••		
Laysan Albatross	—	—	—	—	—	—	—	—	—	—	—	—
Black-footed Albatross	—	—	—	—	—	—	—	—	—	—	—	—
Short-tailed Albatross			••		•	•	•					
Northern Fulmar	—	—	—	—	—	—	—	—	—	—	—	—
Great-winged Petrel (Hyp.)									•			
Juan Fernandez Petrel *						•						
Murphy's Petrel *									••	•		
Mottled Petrel *	—	—	—	—	—		•					—
Hawaiian Petrel *							•••		•	•		
Cook's Petrel *							••		••	••		
Parkinson's/White-chin. Petrel *										•		
Streaked Shearwater									••			
Great Shearwater							•					
Pink-footed Shearwater	—	—	—	—	—	—	—	—	—	—	—	—
Flesh-footed Shearwater		•								—		••
Wedge-tailed Shearwater			•				•			•		
Buller's Shearwater									—	—	—	—
Sooty Shearwater	—	—	—	—	—	—	—	—	—	—	—	—
Short-tailed Shearwater	—	—	—	—	—	—	—	—	—	—	—	—
Manx Shearwater +												—
Black-vented Shearwater +	•	•		•								
Wilson's Storm-Petrel					•		•		•			•
Fork-tailed Storm-Petrel #	—	—	—	—	—	—	—	—	—	—	—	—
Hornby's Storm-Petrel				•								
Leach's Storm-Petrel *#	—	—	—	—	—	—	—	—	—	—	—	—
Ashy Storm-Petrel				••			•		•			
Black Storm-Petrel				••					•••			
Red-billed Tropicbird *				•	•		•		•			
Masked Booby								•				

	Jan	Feb	Mar	Apr	May	Jun	Jul	Aug	Sep	Oct	Nov	Dec
Blue-footed Booby									•			
Brown Booby					••			•		•••		
Red-footed Booby (Hyp.)										•		
Magnificent Frigatebird		•••	••				•					
Red-necked Phalarope					—			—	—	—	—	—
Red Phalarope					—			—	—	—	—	—
Sabine's Gull					—			—	—	—	—	—
Black-legged Kittiwake		—	—	—	—						—	—
Red-legged Kittiwake	••		••						•			•
Common Tern					—			—	—	—	—	—
Arctic Tern					—			—	—	—	—	—
South Polar Skua									—	—	—	—
Pomarine Jaeger					—			—	—	—	—	—
Parasitic Jaeger									—	—	—	—
Long-tailed Jaeger									—	—	—	—
Common Murre #	—	—	—	—	—	—	—	—	—	—	—	—
Thick-billed Murre	••	••	••	•	•				••	•		•
Pigeon Guillemot +#									—	—	—	—
Long-billed Murrelet +							•••	•••	•		•	
Marbled Murrelet +#	—	—	—	—	—	—	—	—	—	—	—	—
Kittlitz's Murrelet (Hyp.)							•		•			
Guadalupe Murrelet *							•					
Scripps's Murrelet *												—
Craveri's Murrelet * (Hyp.)							•		•			
Ancient Murrelet	—	—	—	—	—	—	—	—	—	—	—	—
Cassin's Auklet #	—	—	—	—	—	—	—	—	—	—	—	—
Parakeet Auklet *									•	••		—
Whiskered Auklet (Hyp.)			•									
Rhinoceros Auklet #	—	—	—	—	—	—	—	—	—	—	—	—
Horned Puffin *	—	—	—	—	—	•	•••••	•••	•			•
Tufted Puffin #									—	—	—	—

* Found primarily in deep water more than 50 miles from shore.

+ Found primarily within 8 miles of shore.

Breeds in Oregon.

Hyp. Hypothetical. Sight records only; no records yet accepted by Oregon Bird Records Committee.

Updated: August 2012